

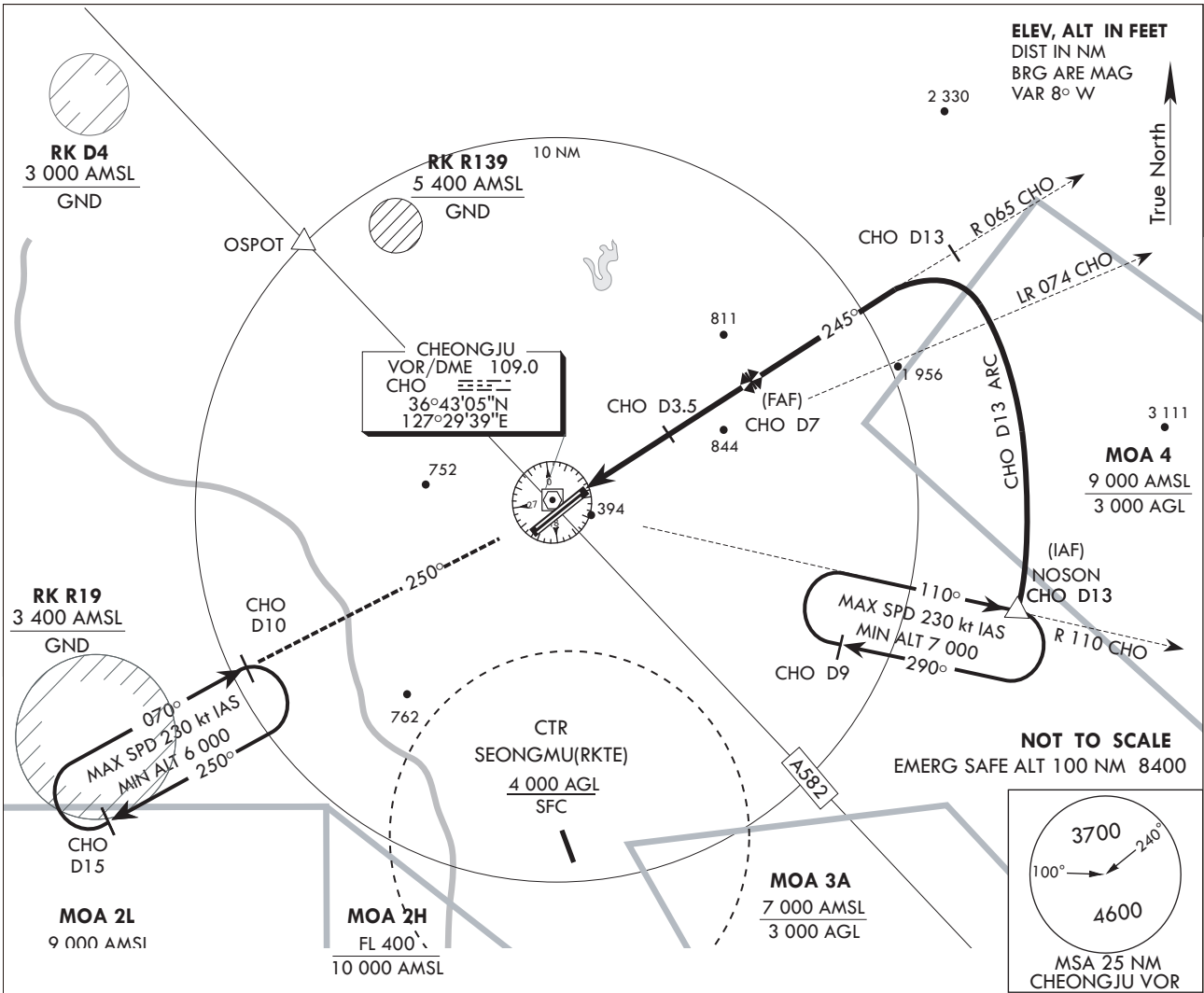
**INSTRUMENT
APPROACH
CHART**

AERODROME ELEV 192 ft
HEIGHTS RELATED TO
THR RWY 24R-ELEV 186 ft

JUNGWON APP 134.0 265.75
CHEONGJU TWR 118.7 126.2
236.6 249.6

**CHEONGJU/Cheongju INTL
VOR/DME
RWY 24R**

Note : Approach and circling-to-land under U.S.TERPS

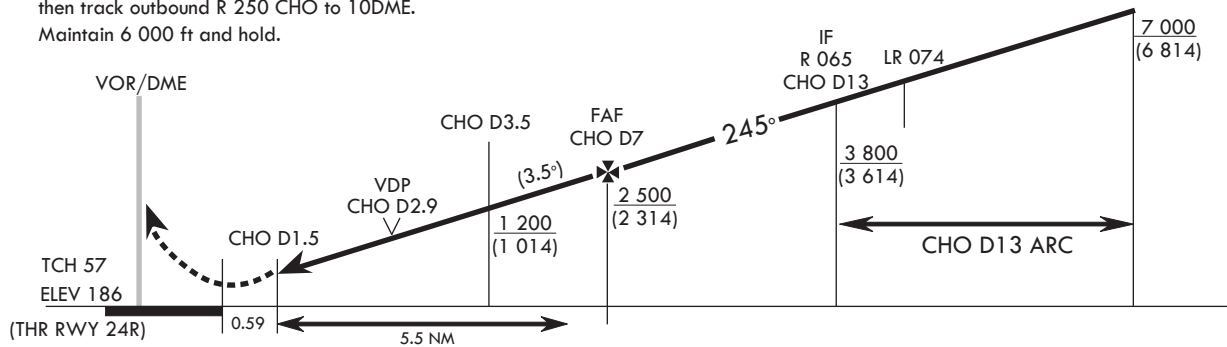


MISSED APPROACH

Climb on R 065 CHO to over CHO VOR,
then track outbound R 250 CHO to 10DME.
Maintain 6 000 ft and hold.

Transition	ALT	14 000
Transition	LVL	FL 140

IAF
NOSON
R 110 CHO/D13



CATEGORY	A	B	C	D
S-VOR/DME 24R	860/24 674 (700- $\frac{1}{2}$)		860-1 $\frac{1}{2}$ 674 (700-1 $\frac{1}{2}$)	860-1 $\frac{3}{4}$ 674 (700-1 $\frac{3}{4}$)
CIRCLING	860-1 668 (700-1)		860-2 668 (700-2)	1 200-3 1 008 (1 100-3)

Missed approach obstacle climb rate table

Rate of descent	V/V (fpm)	KNOTS					
		60	120	180	240	300	TO
		320	630	940	1 250	1 560	6 000

Change : Information of missed APP climb table and WX minima.

INTENTIONALLY

LEFT

BLANK

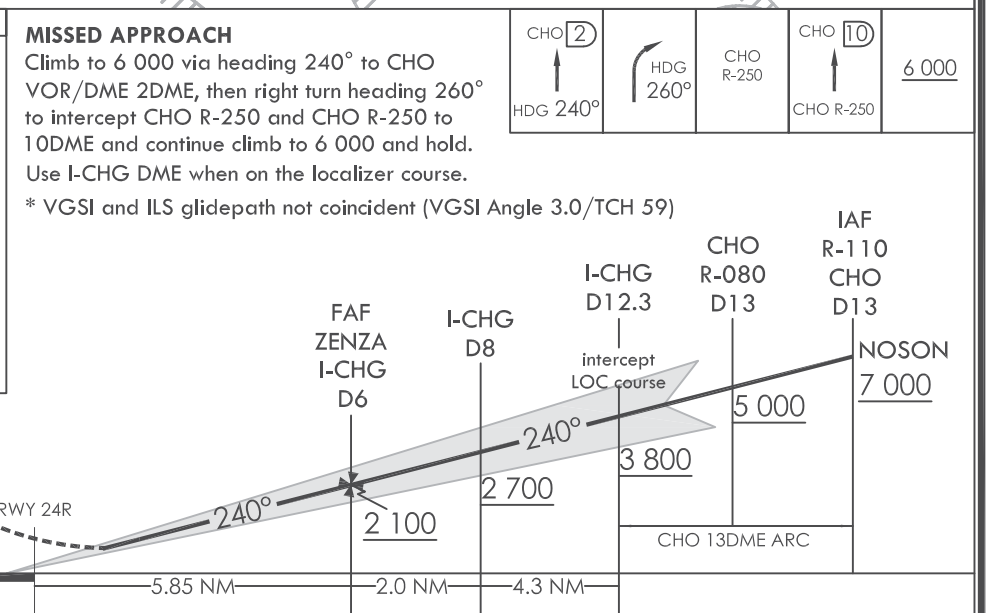
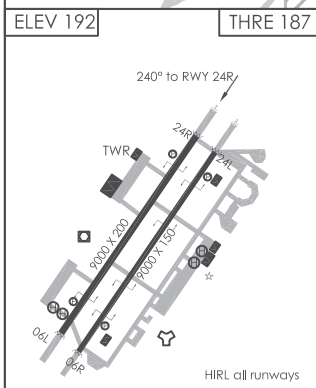
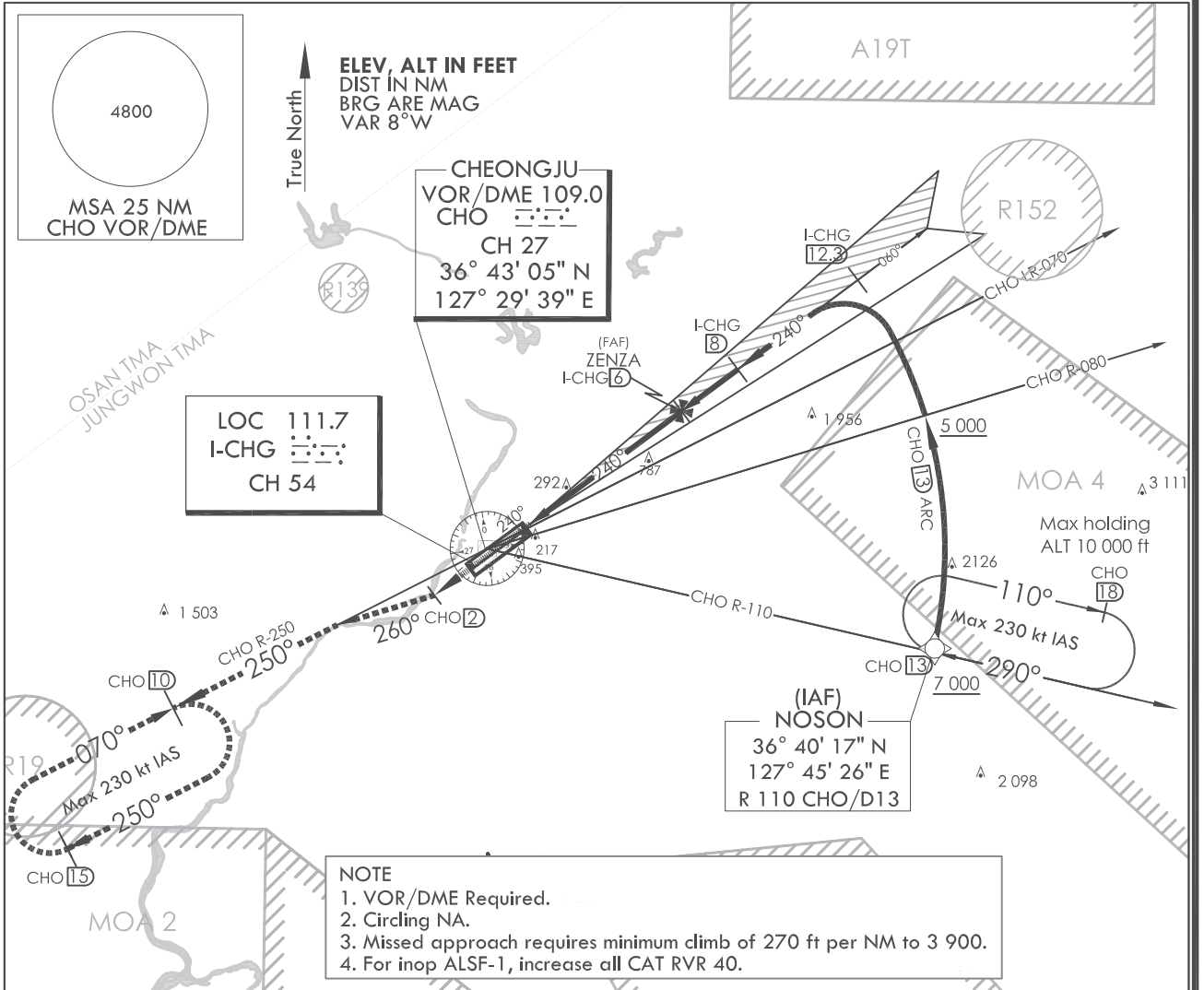
INSTRUMENT APPROACH CHART

AERODROME ELEV 192 ft
HEIGHTS RELATED TO
THR RWY 24R - ELEV 187 ft

JUNGWON APP 134.0 134.1
134.4
CHEONGJU TWR 118.7 126.2

CHEONGJU/Cheongju INTL(RKTU) ILS Y RWY 24R

Note : Approach and circling-to land under U.S TERPS.



CATEGORY		A	B	C	D	E
S-ILS 24R	ALS		387/24	200(200- $\frac{1}{2}$)		NA
	ALS inop		387/40	200(200- $\frac{3}{4}$)		NA

Change : New procedure.

INTENTIONALLY

LEFT

BLANK

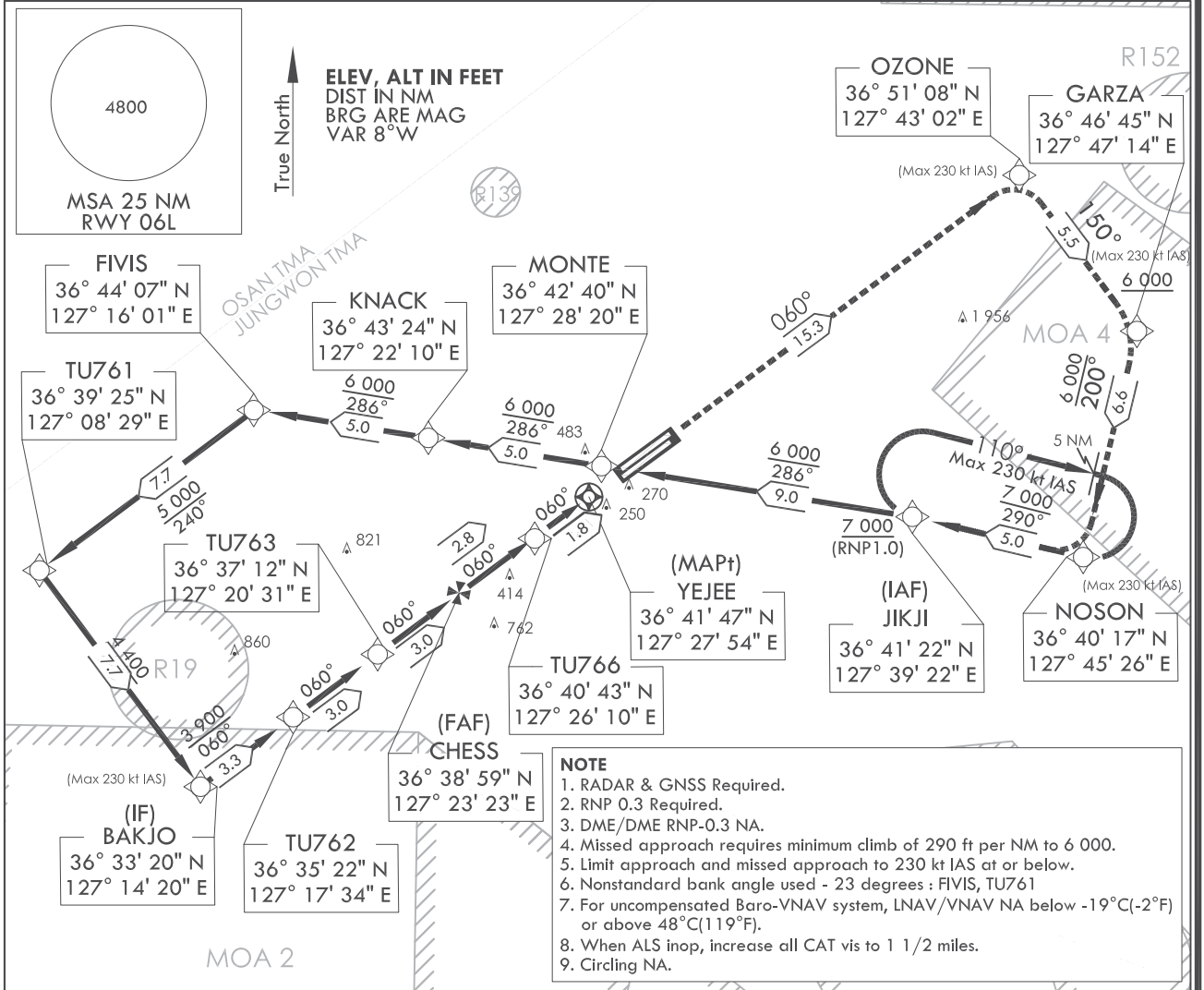
INSTRUMENT APPROACH CHART

AERODROME ELEV 192 ft
HEIGHTS RELATED TO
THR RWY 06L - ELEV 167 ft

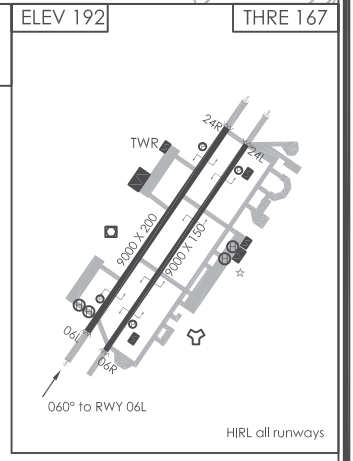
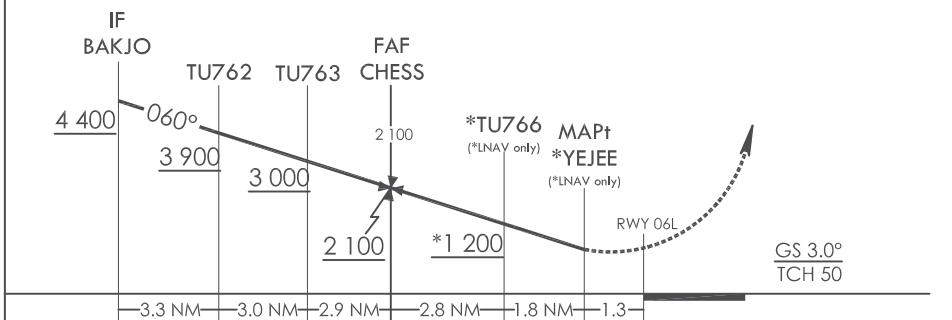
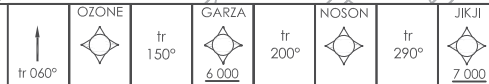
JUNGWON APP 134.0 134.1
134.4
CHEONGJU TWR 118.7 126.2

CHEONGJU/Cheongju INTL(RKTU)
RNAV(GNSS)
RWY 06L

Note : Approach under U.S TERPS.



MISSED APPROACH
Climb to 7 000 via on track 060° to OZONE, then track 150° to cross GARZA at or above 6 000, then track 200° to NOSON, then track 290° to JIKJI and hold.



CATEGORY		A	B	C	D	E
LNAV/VNAV DA	ALS		625-1 $\frac{1}{4}$	458(500-1 $\frac{1}{4}$)		NA
	ALS inop		625-1 $\frac{1}{2}$	458(500-1 $\frac{1}{2}$)		NA
LNAV MDA	ALS		620-1 $\frac{1}{4}$	453(500-1 $\frac{1}{4}$)		NA
	ALS inop		620-1 $\frac{1}{2}$	453(500-1 $\frac{1}{2}$)		NA
CIRCLING		NA				

Change : New procedure.

CHEONGJU/Cheongju INTL(RKTU)
RNAV(GNSS)
RWY 06L

AERONAUTICAL DATA TABULATION

Instrument Approach Procedure Coding Tables

RNAV(GNSS) RWY 06L

Serial Number	Path Descriptor	Waypoint Identifier	Fly-over	Course/Track °M(°T)	Distance (NM)	Turn direction	Altitude (ft)	Speed (kt)	Coordinates	VPA/TCH	Navigation specification	Remarks
001	-	JKJI	-	-	-	-	+7 000	-	364121.7 N 1273922.1 E	-	RNAV 1	IAF
002	TF	MONTE	-	286 (278.5)	9.0	-	+6 000	-	364240.4 N 1272819.6 E	-	RNAV 1	-
003	TF	KNACK	-	286 (278.3)	5.0	-	+6 000	-	364323.8 N 1272210.3 E	-	RNAV 1	-
004	TF	FVIS	-	286 (278.3)	5.0	-	+6 000	-	364406.8 N 1271601.0 E	-	RNAV 1	-
005	TF	TU761	-	240 (232.3)	7.7	-	+5 000	-	363925.0 N 1270829.0 E	-	RNAV 1	-
006	TF	BAKJO	-	150 (142.2)	7.7	-	+4 400	-230	363320.1 N 1271419.5 E	-	RNAV 1	-
007	TF	TU762	-	060 (052.1)	3.3	-	+3 900	-	363521.9 N 1271733.6 E	-	RNAV 1	IF
008	TF	TU763	-	060 (052.3)	3.0	-	+3 000	-	363712.1 N 1272030.5 E	-	RNAV 1	-
009	TF	CHESS	-	060 (052.3)	2.9	-	+2 100	-	363859.3 N 1272322.9 E	-	RNP 0.3	FAF
010	TF	TU766	-	060 (052.4)	2.8	-	+1 200	-	364042.9 N 1272609.9 E	-	RNP 0.3	(LNAV only)
011	TF	YEJEE	Y	060 (052.4)	1.8	-	+620	-	364147.4 N 1272753.8 E	-	RNP 0.3	MAP(LNAV only)
012	TF	OZONE	-	060 (052.4)	1.5.3	-	-	-230	365108.3 N 1274301.8 E	-	RNAV 1	CG 290 ft/NM to 6 000
013	TF	GARZA	-	150 (142.4)	5.5	-	+6 000	-230	364644.7 N 1274714.2 E	-	RNAV 1	-
014	TF	NOSON	-	200 (192.6)	6.6	-	-	-230	364016.6 N 1274526.2 E	-	RNAV 1	-
015	TF	JKJI	-	290 (282.5)	5.0	-	@7 000	-230	364121.7 N 1273922.1 E	-	RNAV 1	-
016	HM	JKJI	-	290 (282.5)	5.0	R	-	-	364121.7 N 1273922.1 E	-	-	-

Change : New procedure.

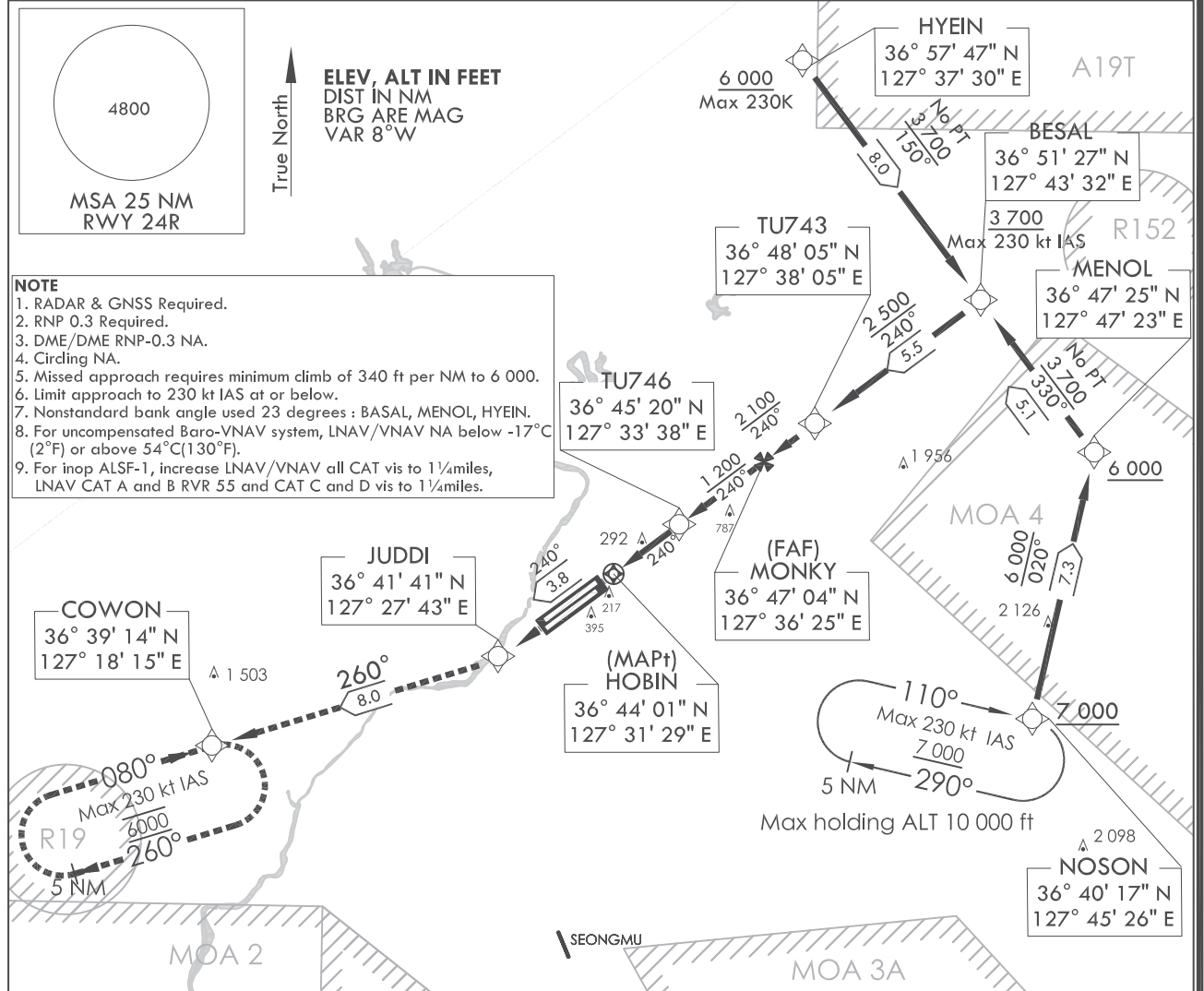
**INSTRUMENT
APPROACH
CHART**

AERODROME ELEV 192 ft
HEIGHTS RELATED TO
THR RWY 24R - ELEV 187 ft

JUNGWON APP 134.0 134.1
134.4
CHEONGJU TWR 118.7 126.2

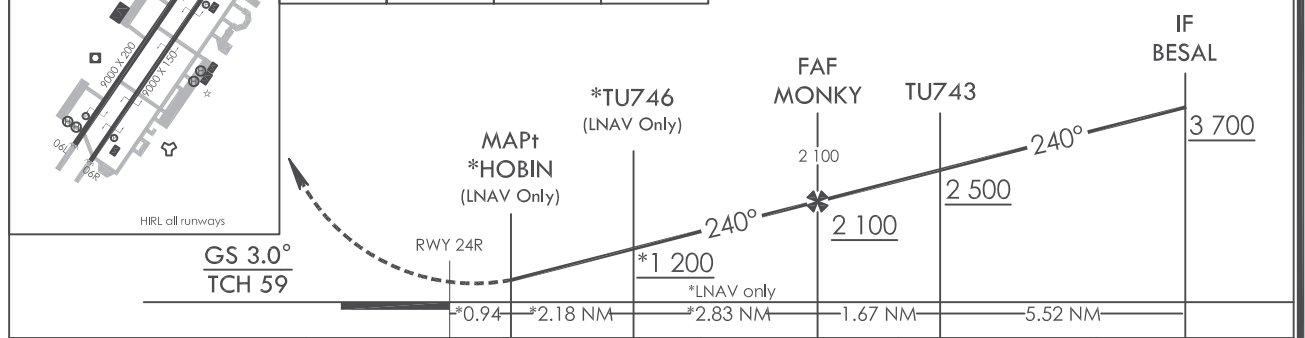
CHEONGJU/Cheongju INTL(RKTU)
RNAV(GNSS)
RWY 24R

Note : Approach under U.S. TERPS.



ELEV 192	THRE 187	JUDDI	COWON
		tr 240°	tr 260°

MISSED APPROACH
Climb to 6 000 via on track 240° to JUDDI, then track 260° to COWON, then continue climb to 6 000 and hold.



CATEGORY		A	B	C	D	E
LNAV/VNAV DA	ALS	602/40 415(500- $\frac{7}{8}$)				NA
	ALS inop	602/1 $\frac{1}{4}$ 415(500-1 $\frac{1}{4}$)				NA
LNAV MDA	ALS	620/40 433(500- $\frac{3}{4}$)				NA
	ALS inop	620/55 433(500-1)		620-1 $\frac{1}{4}$ 433(500-1 $\frac{1}{4}$)		NA
CIRCLING		NA				

Change : New procedure.

CHEONGJU/Cheongju INTL(RKTU)
RNAV(GNSS)
RWY 24R

AERONAUTICAL DATA TABULATION

Instrument Approach Procedure Coding Tables

RNAV(GNSS) RWY 24R - via NOSON to BESAL(IF)

Serial Number	Path Descriptor	Waypoint Identifier	Fly-over	Course/Track °M(°T)	Distance (NM)	Turn direction	Altitude (ft)	Speed (kt)	Coordinates	VPA/TCH	Navigation specification	Remarks
001	-	NOSON	-	-	-	-	+7 000	-	364016.6 N 1274526.2 E	-	RNAV 1	IAF
002	TF	MENOL	-	020 (01 2.32)	7.3	-	+6 000	-	364725.1 N 1274722.5 E	-	RNAV 1	-
003	TF	BESAL	-	330 (322.61)	5.1	-	+3 700	-230	365127.0 N 1274332.3 E	-	RNAV 1	IF

RNAV(GNSS) RWY 24R - via HYEIN to BESAL(IF)

Serial Number	Path Descriptor	Waypoint Identifier	Fly-over	Course/Track °M(°T)	Distance (NM)	Turn direction	Altitude (ft)	Speed (kt)	Coordinates	VPA/TCH	Navigation specification	Remarks
001	TF	HYEIN	-	-	-	-	+6 000	-230	365747.1 N 1273729.7 E	-	RNAV 1	IAF
002	TF	BESAL	-	150 (142.51)	8.0	-	+3 700	-230	365127.0 N 1274332.3 E	-	RNAV 1	IF

RNAV(GNSS) RWY 24R - via BESAL(IF) to MAHF

Serial Number	Path Descriptor	Waypoint Identifier	Fly-over	Course/Track °M(°T)	Distance (NM)	Turn direction	Altitude (ft)	Speed (kt)	Coordinates	VPA/TCH	Navigation specification	Remarks
001	TF	BESAL	-	-	-	-	+3 700	-230	365127.0 N 1274332.3 E	-	RNAV 1	IF
002	TF	TU743	-	240 (232.56)	5.5	-	+2 500	-	364805.3 N 1273804.9 E	-	RNAV 1	-
003	TF	MONKY	-	240 (232.51)	1.7	-	+2 100	-	364703.7 N 1273625.0 E	-	RNP 0.3	FAF
004	TF	TU746	-	240 (232.49)	2.8	-	+1 200	-	364520.2 N 1273337.6 E	-	RNP 0.3	LNAV only
005	TF	HOBIN	Y	240 (232.46)	2.2	-	+620	-	364400.5 N 1273128.6 E	-	RNP 0.3	MAP(LNAV only)
006	TF	JUDDI	-	240 (232.44)	3.8	-	-	-	364140.5 N 1272742.6 E	-	RNAV 1	CG 340 ft/NM to 6 000
007	TF	COWON	-	260 (252.25)	8.0	-	6 000	-	363913.6 N 1271814.5 E	-	RNAV 1	-
008	HM	NOSON	-	110 (102.15)	5.0	-	+7 000	-	364016.6 N 1274526.2 E	-	-	-
009	HM	COWON	-	080 (072.25)	5.0	-	@6 000	-	363913.6 N 1271814.5 E	-	-	-

Change : New procedure.

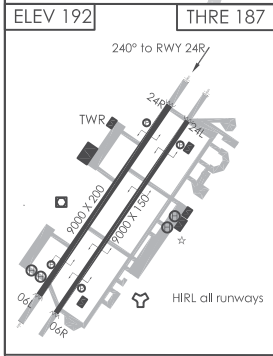
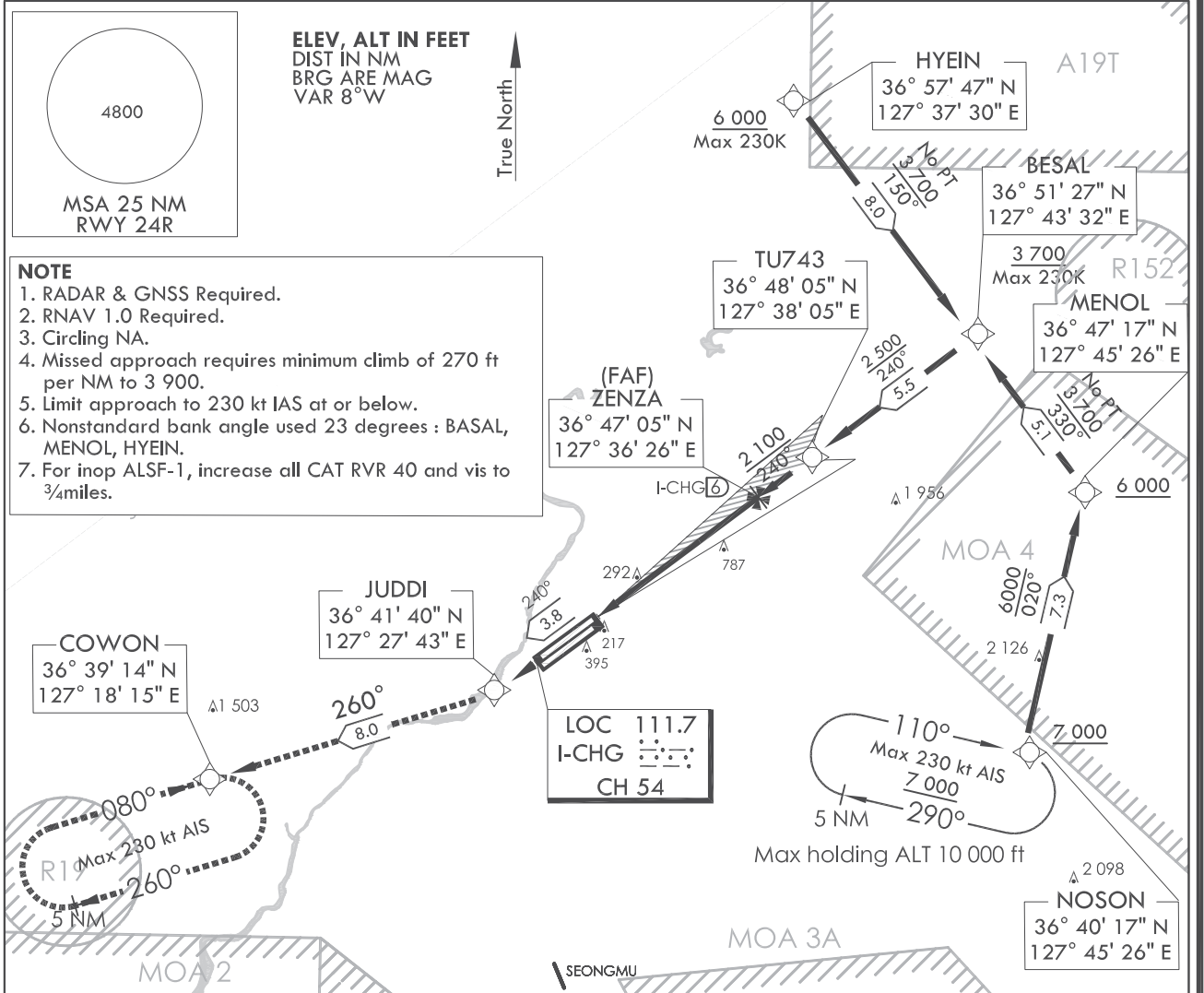
**INSTRUMENT
APPROACH
CHART**

AERODROME ELEV 192 ft
HEIGHTS RELATED TO
THR RWY 24R - ELEV 187 ft

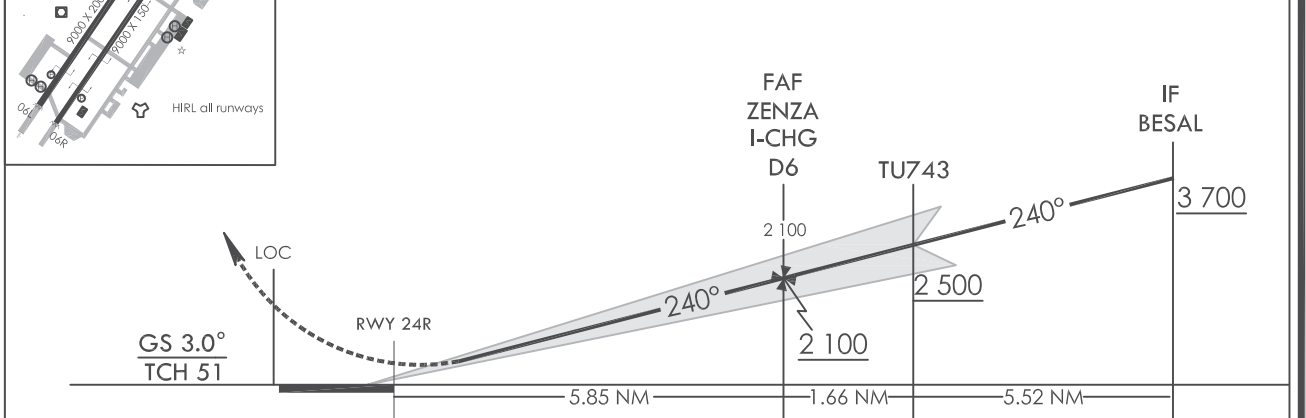
JUNGWON APP 134.0 134.1
134.4
CHEONGJU TWR 118.7 126.2

CHEONGJU/Cheongju INTL(RKTU)
ILS Z
RWY 24R

Note : Approach and circling-to land under U.S TERPS.



JUDDI	tr 240°	COWON
TRANSITION ALT 14 000 TRANSITION LVL FL 140		



CATEGORY		A	B	C	D	E
S-ILS 24R	ALS		387/24	200(200- $\frac{1}{2}$)		NA
	ALS inop		387/40	200(200- $\frac{3}{4}$)		NA

Change : New procedure.

INTENTIONALLY

LEFT

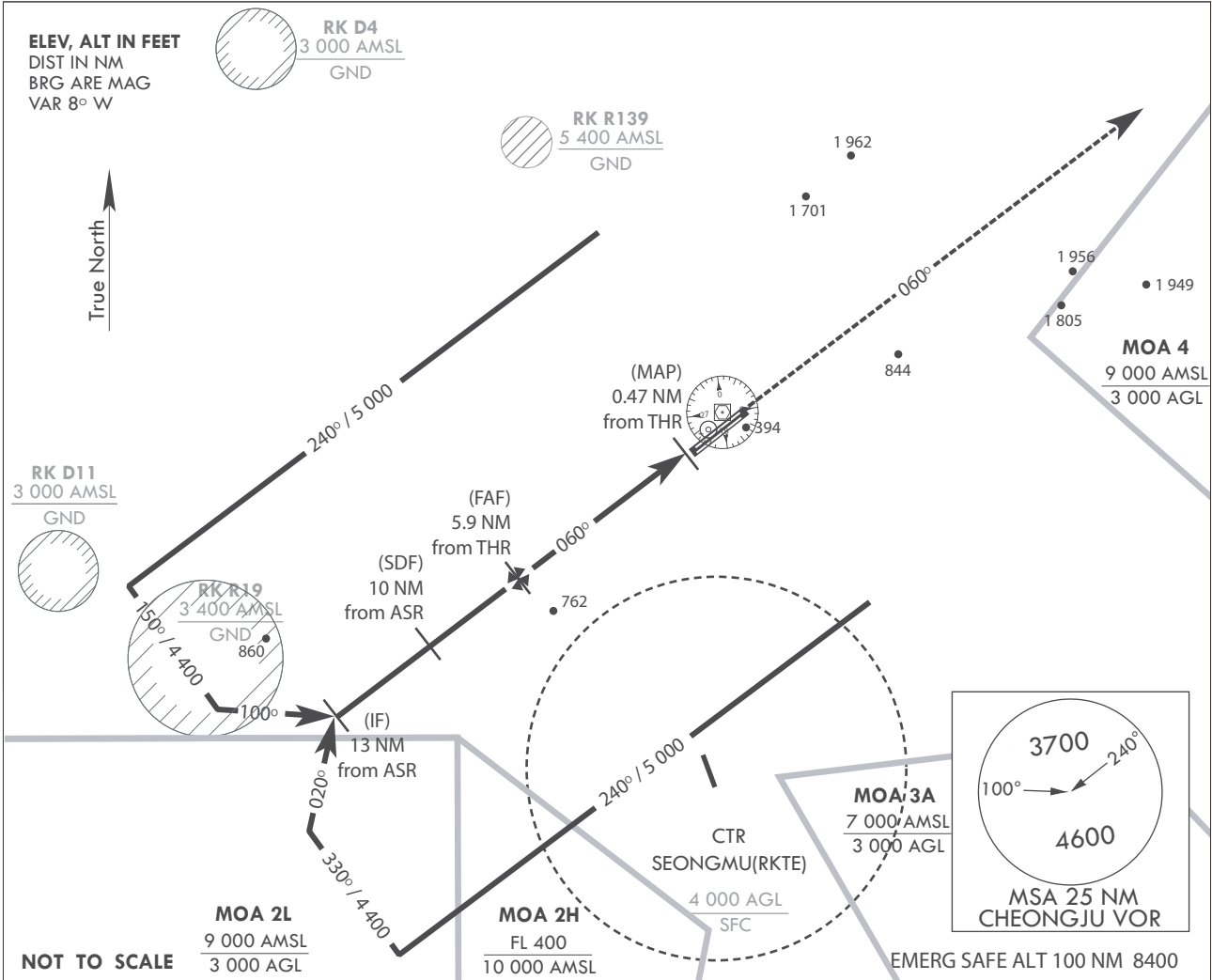
BLANK

INSTRUMENT APPROACH CHART
 AERODROME ELEV 192 ft
 HEIGHTS RELATED TO THE RWY 06L-ELEV 168 ft

JUNGWON APP	134.0	265.75
CHEONGJU TWR	118.7	126.2
	236.6	249.6

CHEONGJU/Cheongju INTL
 PAR
 RWY 06L

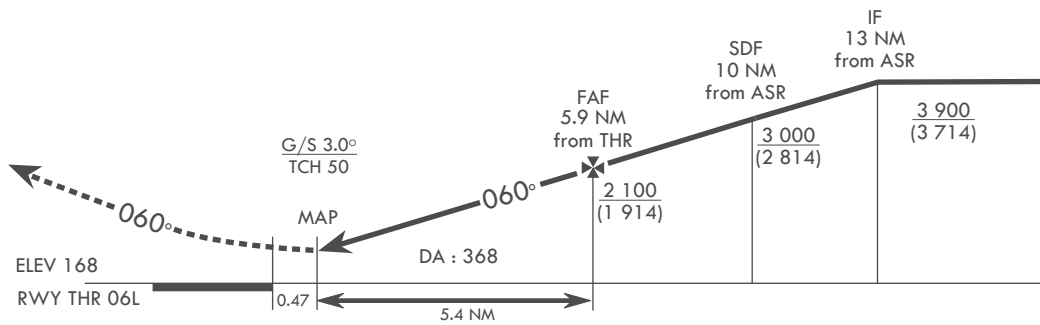
Note : Approach and circling-to-land under U.S.TERPS



MISSED APPROACH

Climb on heading 060 to 6 000 ft.

TRANSITION ALT 14 000
TRANSITION LVL FL 140



CATEGORY	A	B	C	D
S-PAR 06L	368/24 200 (200 - 1/2)			
When ALS inop, increase vis 1/4 mile.				
CIRCLING	N/A			

MAPCH Climb Rate to 6 000

KNOTS	60	120	180	240	300
V/V(fpm)	380	760	1 140	1 520	1 900

Change : Withdrawal of A815.

INTENTIONALLY

LEFT

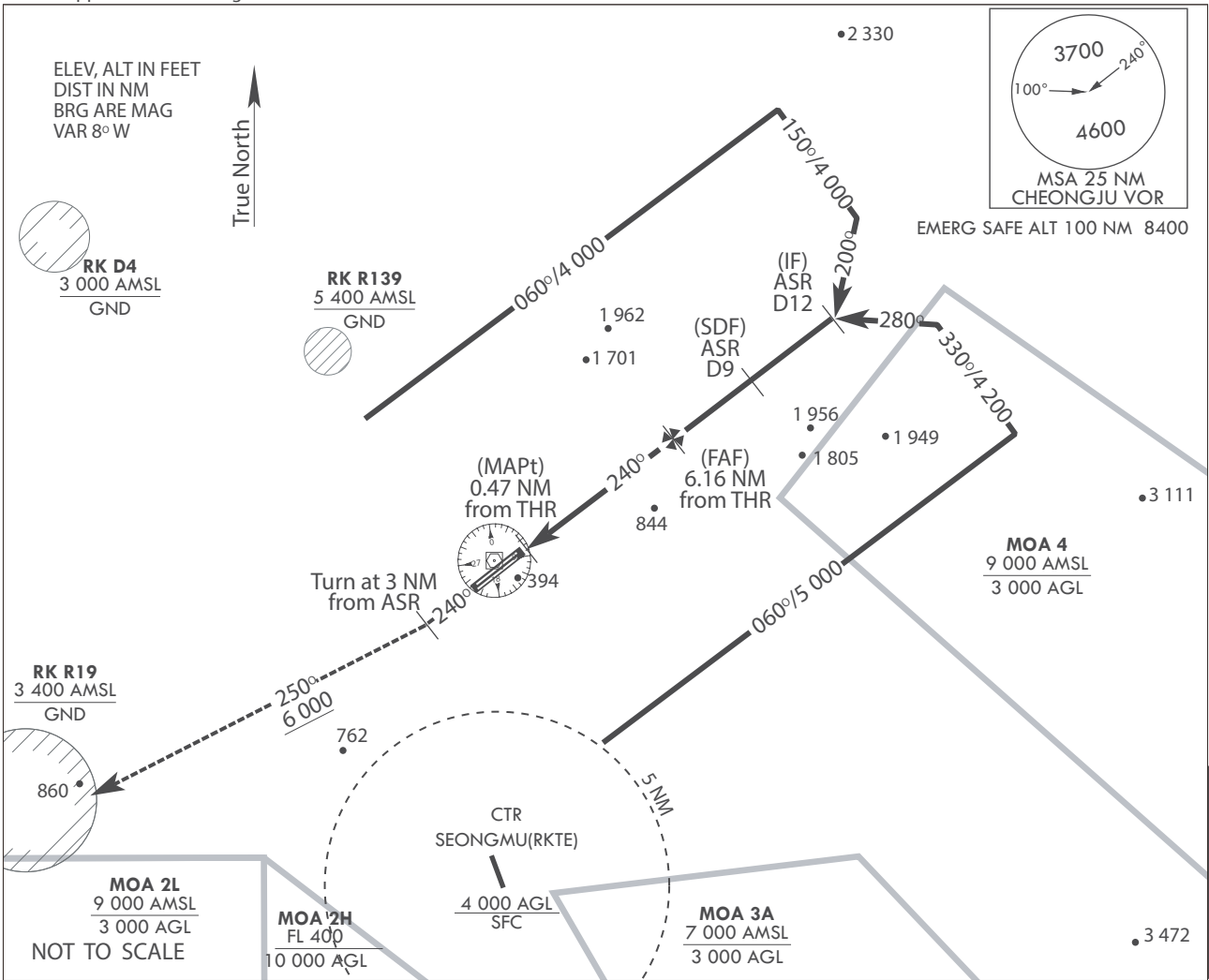
BLANK

INSTRUMENT APPROACH CHART
 AERODROME ELEV 192 ft
 HEIGHTS RELATED TO THE RWY 24R-ELEV 186 ft

JUNGWON APP	134.0	265.75
CHEONGJU TWR	118.7	126.2
	236.6	249.6

CHEONGJU/Cheongju INTL
PAR RWY 24R

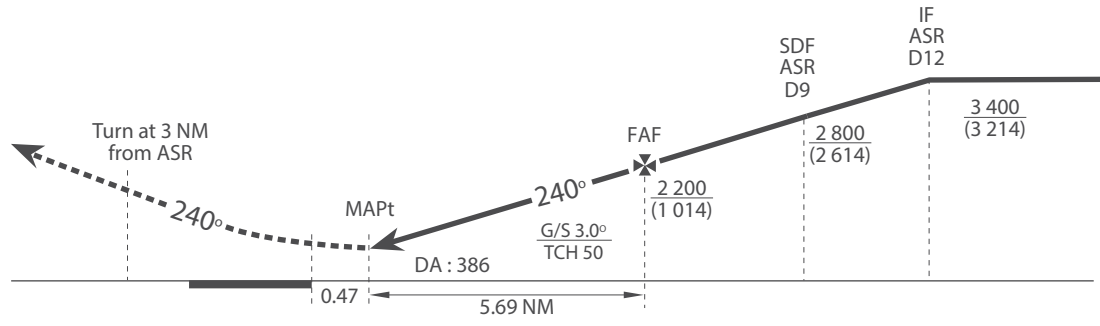
Note : Approach and circling-to-land under U.S.TERPS



MISSED APPROACH

Climb heading 240° to 3 NM then right heading 250° to 6 000.

TRANSITION ALT	14 000
TRANSITION LVL	FL 140



CATEGORY	A	B	C	D	Missed APP climb rate								
					KNOTS	60	120	180	240	300	TO		
S-PAR	386/24 200 (200 - 1/2)												
When ALS inop, increase vis 1/4 mile.					V/V(fpm)	380	760	1 140	1 520	1 900	6 000		

Change : Withdrawal of A815.

INTENTIONALLY

LEFT

BLANK

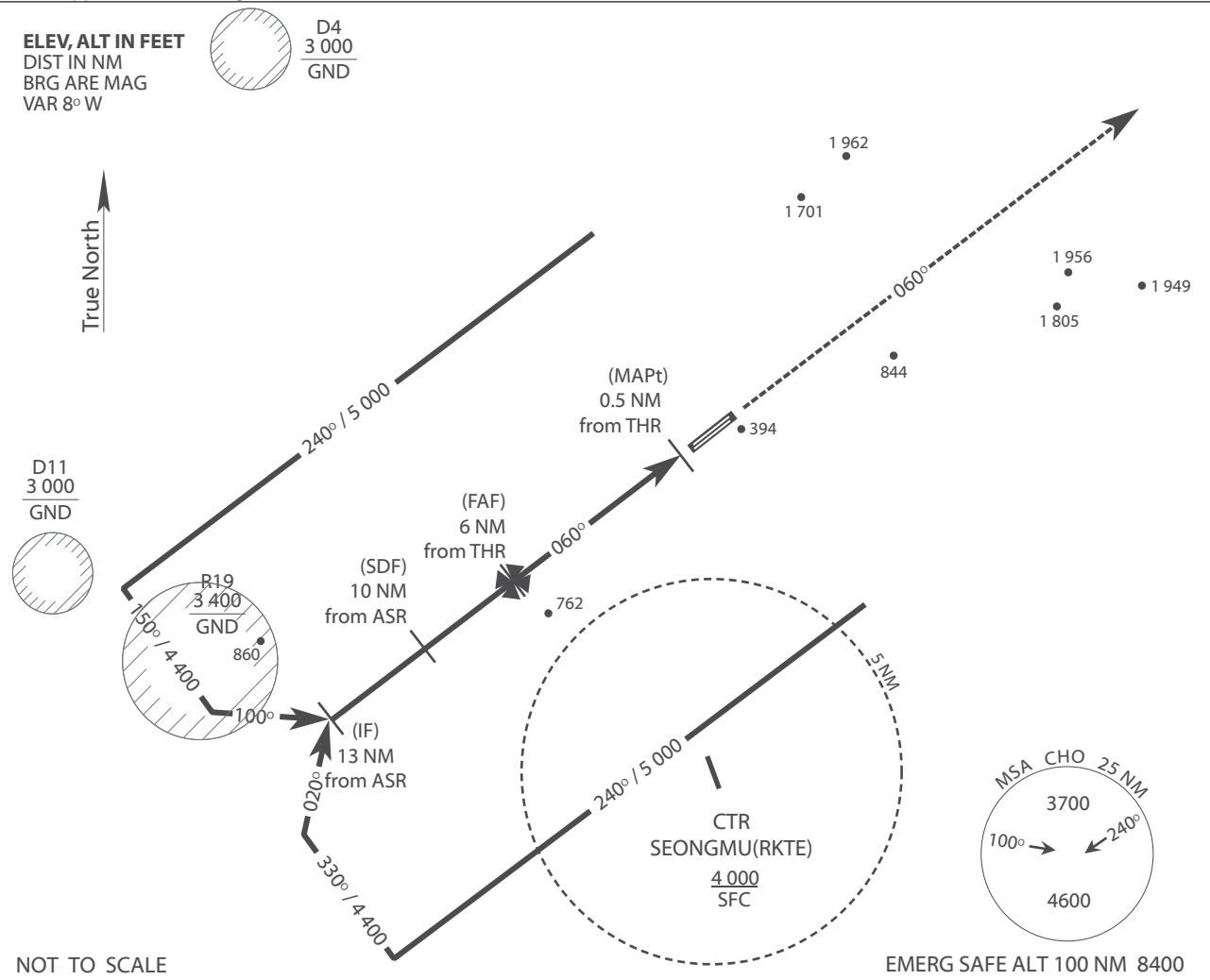
INSTRUMENT APPROACH CHART

AERODROME ELEV 192 ft
 HEIGHTS RELATED TO THE RWY 06L-ELEV 168 ft

JUNGWON APP	134.0	265.75
CHEONGJU TWR	118.7	126.2
	236.6	249.6

CHEONGJU/Cheongju INTL
ASR
RWY 06L

Note : Approach and circling-to-land under U.S.TERPS



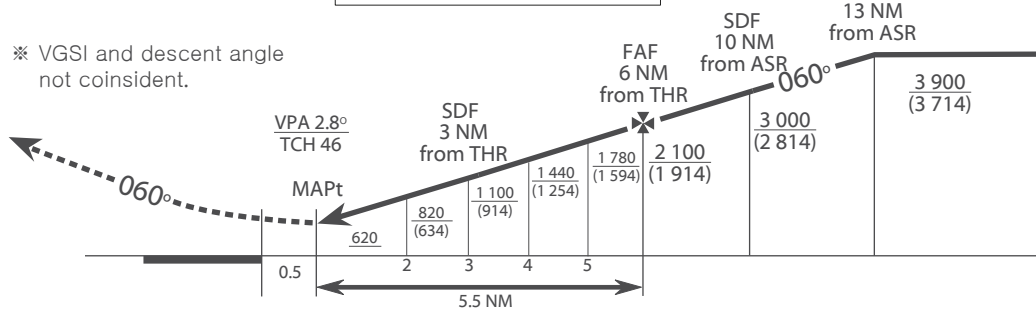
NOT TO SCALE

EMERG SAFE ALT 100 NM 8400

MISSED APPROACH
 Climb on heading 060 to 6 000 ft.

TRANSITION ALT 14 000
TRANSITION LVL FL 140

※ VGSI and descent angle not coincident.



CATEGORY	A	B	C	D	E
S-ASR 06L	620/24 452 (500 - 1/2)		620/40 452 (500-3/4)		620/50 452 (500 - 1)

When ALS inop, increase vis 1/2 mile.

CIRCLING	780-1 588 (600-1)	820-1 628 (700-1)	820-1 3/4 628 (700-1 3/4)	1 200-3 1 008 (1 100-3)	1 220-3 1 028 (1 100-3)
CAT "E" acft circling not authorized SE of RWY 06-24.					

MAPCH Climb Rate to 6 000

KNOTS	60	120	180	240	300
V/V(fpm)	380	760	1 140	1 520	1 900

Change : Withdrawal of A815.

INTENTIONALLY

LEFT

BLANK

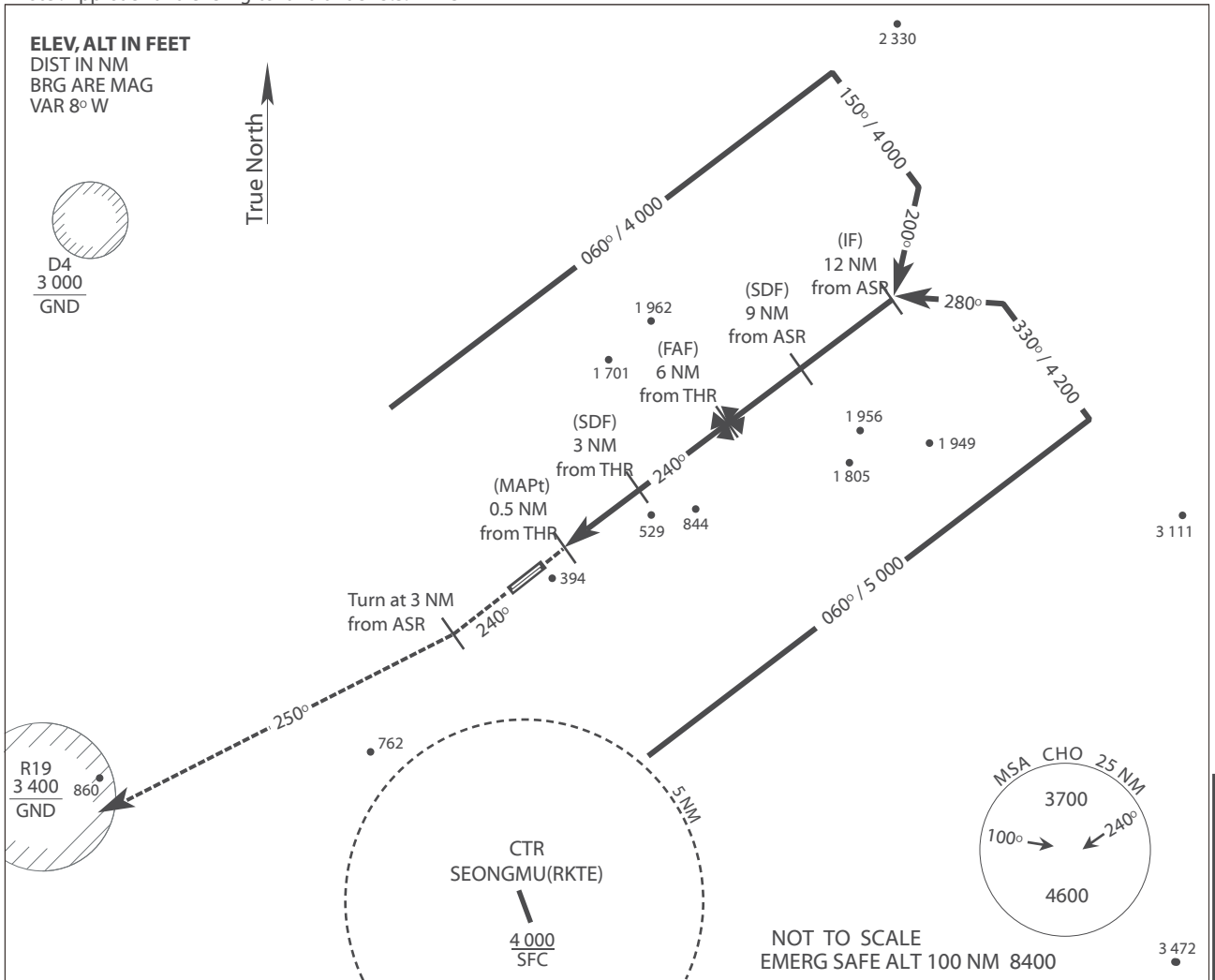
INSTRUMENT APPROACH CHART

AERODROME ELEV 192 ft
HEIGHTS RELATED TO THE RWY 24R-ELEV 186 ft

JUNGWON APP	134.0	265.75
CHEONGJU TWR	118.7	126.2
	236.6	249.6

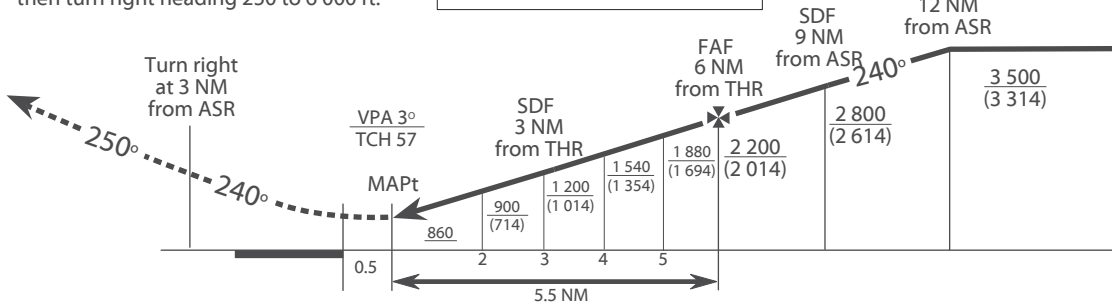
CHEONGJU/Cheongju INTL ASR RWY 24R

Note : Approach and circling-to-land under U.S.TERPS



MISSED APPROACH
Climb on heading 240 to 3 NM ft ASR
then turn right heading 250 to 6 000 ft.

TRANSITION ALT 14 000
TRANSITION LVL FL 140



CATEGORY	A	B	C	D	E
S-ASR 24R	860/24 674 (700 - 1/2)		860-1 1/2 674 (700-1 1/2)	860-1 3/4 674 (700-1 3/4)	860-2 674 (700-2)

When ALS inop, increase vis 1/2 mile.

CIRCLING	A	B	C	D	E
	860-1 668 (700-1)	860-2 668 (700-2)	1 200-3 1 008 (1 100-3)	1 320-3 1 28 (1 200-3)	

MAPCH Climb Rate to 6 000

KNOTS	60	120	180	240	300
V/V(fpm)	380	760	1 140	1 520	1 900

Change : Withdrawal of A815.

INTENTIONALLY

LEFT

BLANK

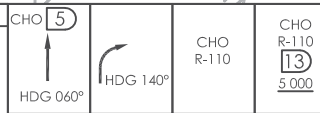
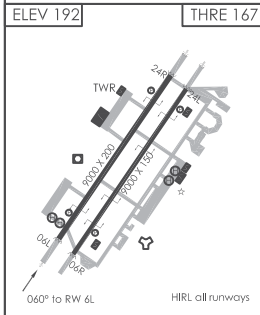
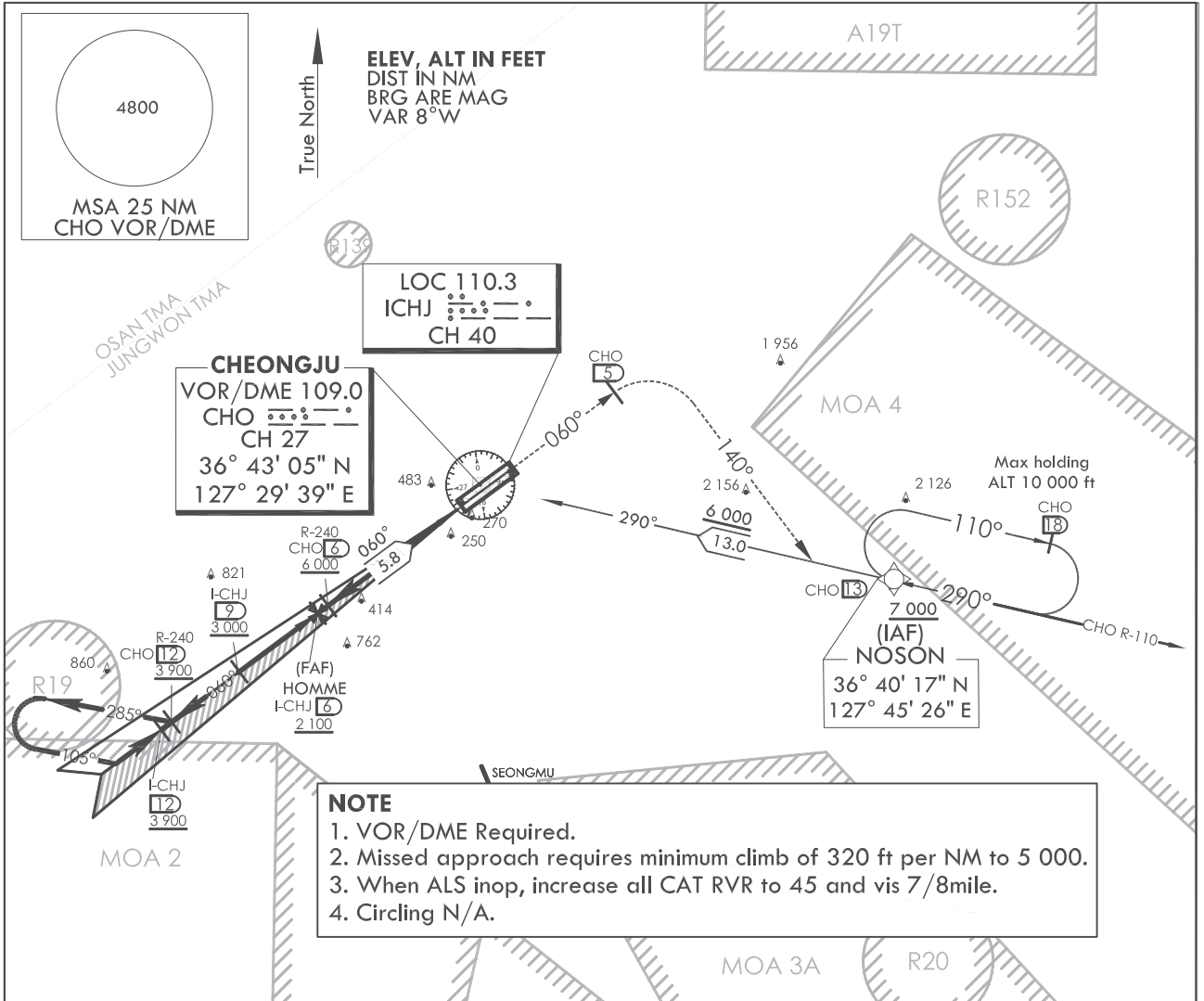
INSTRUMENT APPROACH CHART

AERODROME ELEV 192 ft
HEIGHTS RELATED TO
THR RWY 06L - ELEV 167 ft

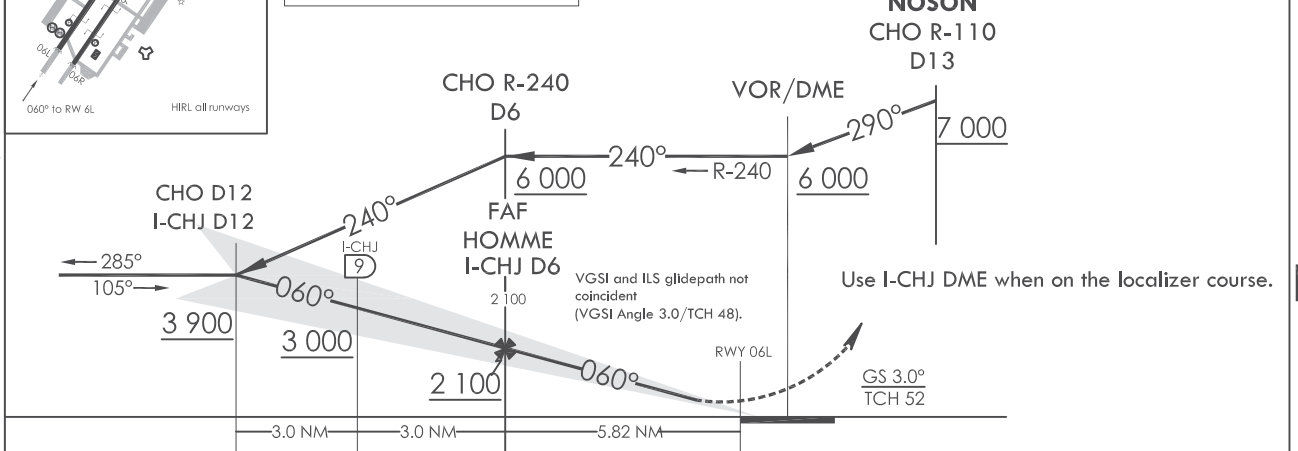
JUNGWON APP 134.0 134.1
134.4
CHEONGJU TWR 118.7 126.2

CHEONGJU/Cheongju Intl(RKTU)
ILS Y
RWY 06L

Note : Approach under circling-to land under U.S. TERPS.



TRANSITION ALT 14 000
TRANSITION LVL FL 140



CATEGORY		A	B	C	D	E
S-ILS 06L	ALS		367/40	200(200- $\frac{3}{4}$)		N/A
	ALS inop		367/45	200(200- $\frac{7}{8}$)		N/A

Change : Amended an error(I-CHG→I-CHJ), Withdrawal of phrases.

CHEONGJU/Cheongju Intl(RKTU)
ILS Y
RWY 06L

AERONAUTICAL DATA TABULATION

ILS Approach to RWY 06L			
Fix/Point		Coordinates	
NOSON	R 110 CHO/13.00NM CHO	36°40'16.6"N	127°45'26.2"E
CHO VOR/DME	-	36°43'04.9"N	127°29'38.7"E
6D CHO	R 240 CHO/6.00NM CHO	-	
12D ICHJ	BRG 60.11°/12.00NM ICHJ	36°35'21.9"N	127°17'33.6"E
9D ICHJ	BRG 60.11°/9.00NM ICHJ	36°37'12.1"N	127°20'30.5"E
HOMME	-	36°39'02.7"N	127°23'28.6"E
RWY 06L THR	-	36°42'36.1"N	127°29'12.4"E
5D CHO	BRG 60.11°/5.00NM CHO	36°46'00.1"N	127°34'42.0"E
R110 CHO	-	-	
NOSON	R 110 CHO/13.00NM CHO	36°40'16.6"N	127°45'26.2"E

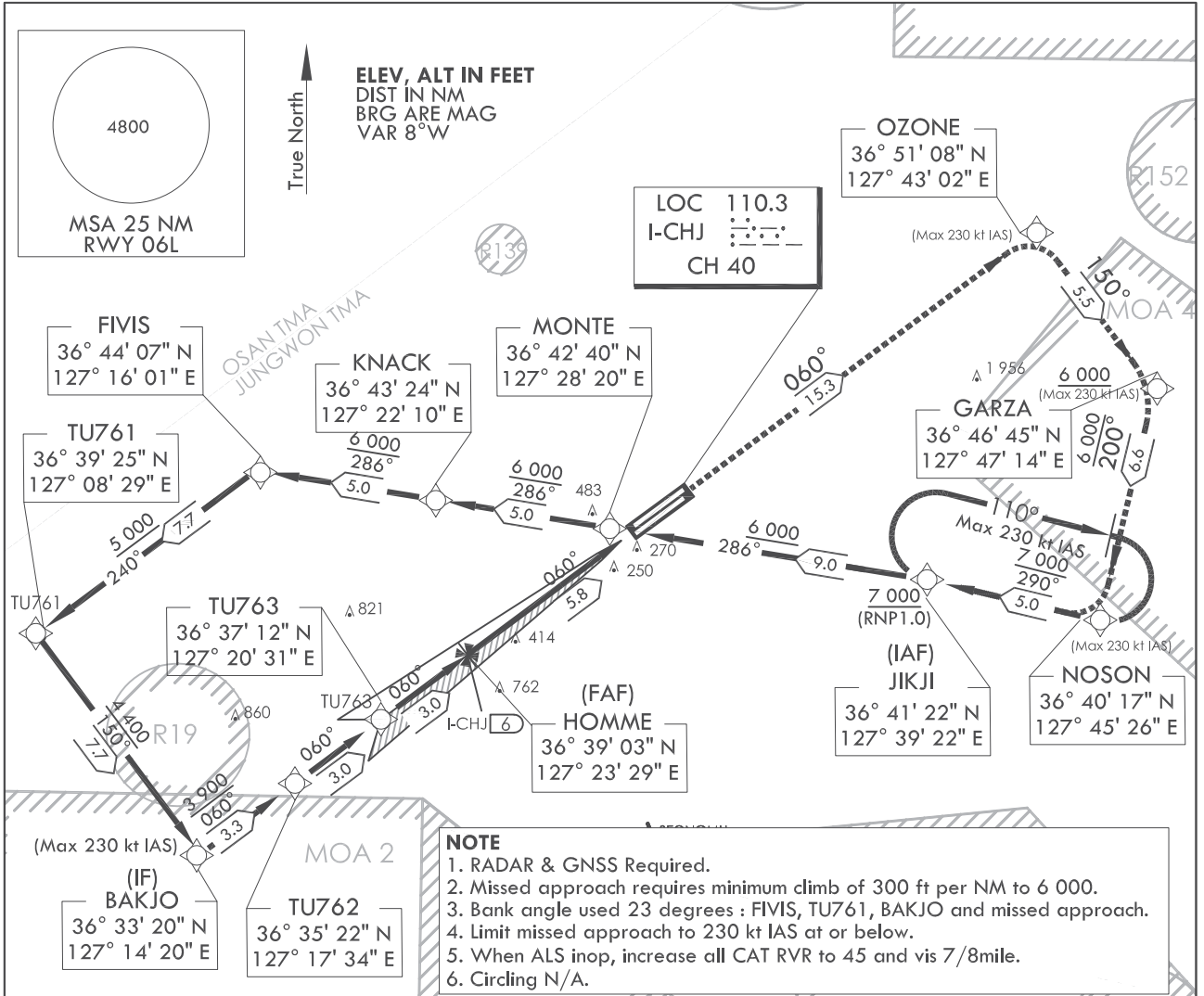
**INSTRUMENT
APPROACH
CHART**

AERODROME ELEV 192 ft
HEIGHTS RELATED TO
THR RWY 06L - ELEV 167 ft

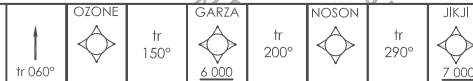
JUNGWON APP 134.0 134.1
134.4
CHEONGJU TWR 126.2 118.7

CHEONGJU/Cheongju Intl(RKTU)
ILS Z
RWY 06L

Note : Approach under circling-to land under U.S. TERPS.



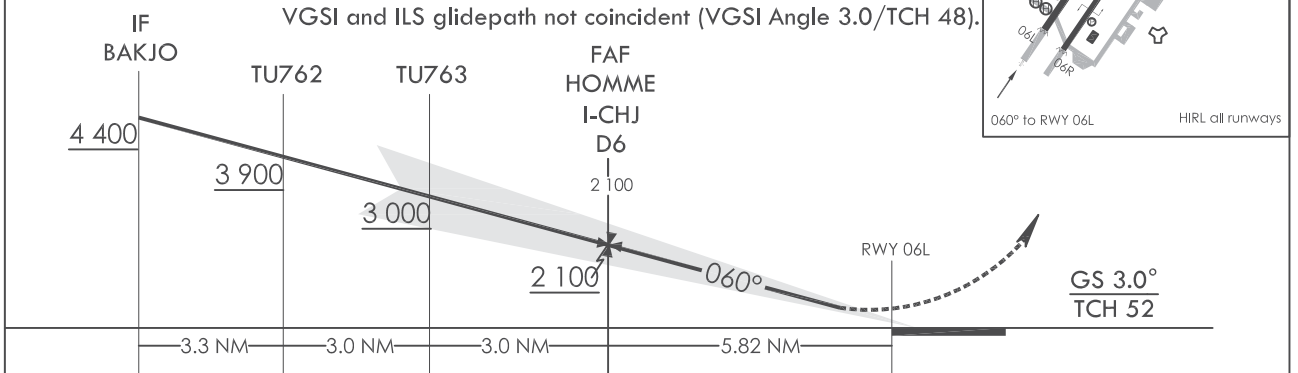
TRANSITION ALT 14 000
TRANSITION LVL FL 140



MISSED APPROACH

Climb to 6 000 via on track 060° to OZONE, then track 150° to cross GARZA at or above 6 000, then track 200° to NOSON, then track 290° to cross JIKJI at or above 7 000 and hold.

Use I-CHJ DME when on the localizer course.
VGSI and ILS glidepath not coincident (VGSI Angle 3.0/TCH 48).



CATEGORY		A	B	C	D	E
S-ILS 06L	ALS		367/40	200(200- $\frac{3}{4}$)		N/A
	ALS inop		367/45	200(200- $\frac{7}{8}$)		N/A

Change : Amended an error(I-KHE→I-CHJ).

CHEONGJU/Cheongju Intl(RKTU)
ILS Z
RWY 06L

AERONAUTICAL DATA TABULATION

ILS Approach to RWY 06L			
Fix/Point		Coordinates	
JIKJI (IAF)	-	36°41'21.7"N	127°39'22.1"E
MONTE	-	36°42'40.4"N	127°28'19.6"E
KNACK	-	36°43'23.8"N	127°22'10.3"E
FIVIS	R 283 CHO/11.00NM CHO	36°44'06.8"N	127°16'01.0"E
TU761	-	36°39'25.0"N	127°08'29.0"E
BAKJO	-	36°33'20.1"N	127°14'19.6"E
TU762	-	36°35'21.9"N	127°17'33.6"E
TU763	-	36°37'12.1"N	127°20'30.5"E
HOMME	-	36°39'02.7"N	127°23'28.6"E
RWY 06L THR	-	36°42'36.1"N	127°29'12.4"E
OZONE	-	36°51'08.3"N	127°43'01.8"E
GARZA	-	36°46'44.7"N	127°47'14.2"E
NOSON	R 110 CHO/13.00NM CHO	36°40'16.6"N	127°45'26.2"E
JIKJI	-	36°41'21.7"N	127°39'22.1"E

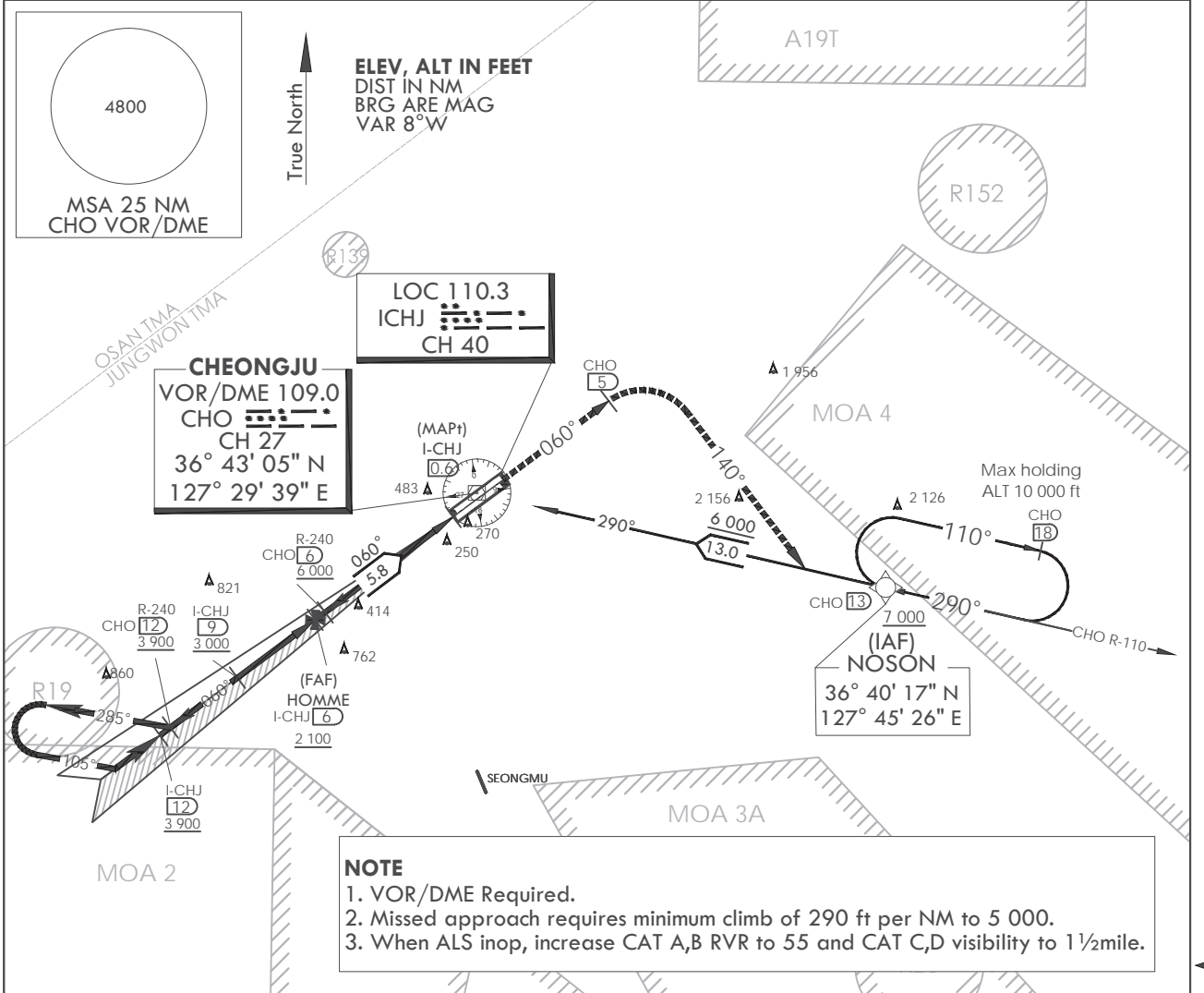
**INSTRUMENT
APPROACH
CHART**

AERODROME ELEV 192 ft
HEIGHTS RELATED TO
THR RWY 06L - ELEV 167 ft

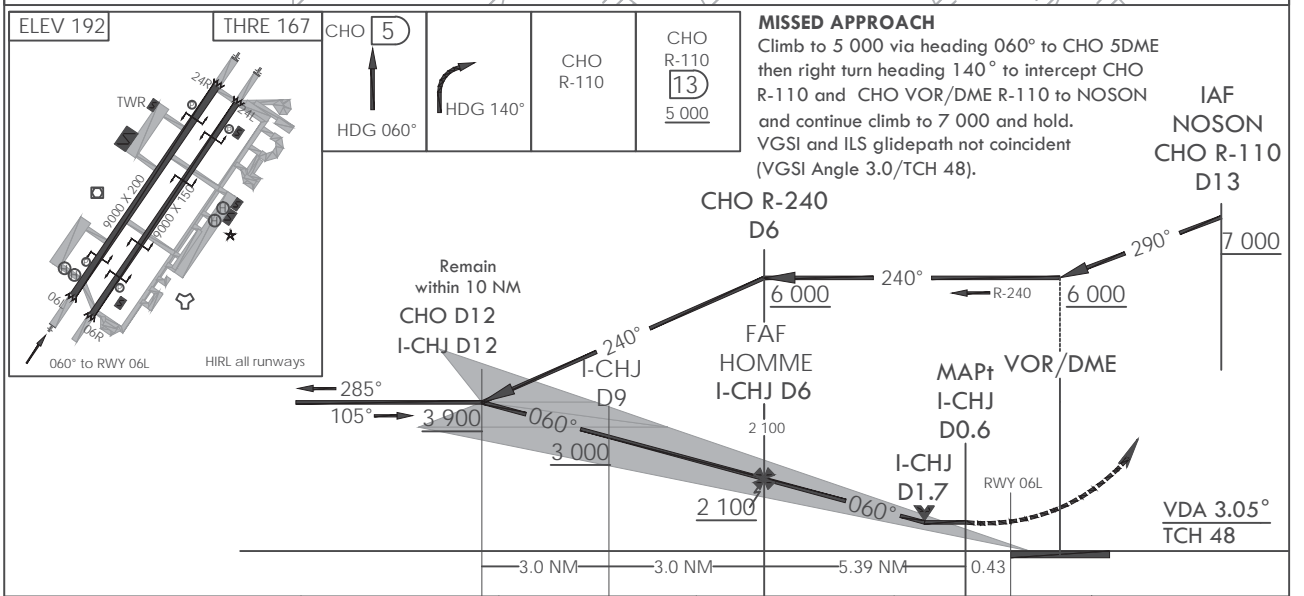
JUNGWON APP 134.0 134.1
134.4
CHEONGJU TWR 126.2 118.7

**CHEONGJU/Cheongju Intl(RKTU)
LOC/DME Y
RWY 06L**

Note : Approach under circling-to land under U.S. TERPS.



NOTE
1. VOR/DME Required.
2. Missed approach requires minimum climb of 290 ft per NM to 5 000.
3. When ALS inop, increase CAT A,B RVR to 55 and CAT C,D visibility to 1½mile.



CATEGORY		A	B	C	D	E
S-LOC 06L	ALS	700/40 533(600- $\frac{3}{4}$)		700-1 $\frac{1}{4}$ 533(600-1 $\frac{1}{4}$)		N/A
	ALS inop	700/55 533(600-1)		700-1 $\frac{1}{2}$ 533(600-1 $\frac{1}{2}$)		N/A
CIRCLING		880-1 688(700-1)		1 200-3 1 008(1 100-3)	2 000-3 1 808(1 900-3)	N/A

Change : Withdrawal of phrases.

CHEONGJU/Cheongju Intl(RKTU)
LOC/DME
RWY 06L

AERONAUTICAL DATA TABULATION

LOC/DME Approach to RWY 06L from LOC/DME			
Fix/Point		Coordinates	
NOSON	R 110 CHO/13.00NM CHO	36°40'16.6"N	127°45'26.2"E
CHO VOR/DME	-	36°43'04.9"N	127°29'38.7"E
6D CHO	R 240 CHO/6.00NM CHO	-	
12D ICHJ	BRG 60.11°/12.00NM ICHJ	36°35'21.9"N	127°17'33.6"E
9D ICHJ	BRG 60.11°/9.00NM ICHJ	36°37'12.1"N	127°20'30.5"E
HOMME	-	36°39'02.7"N	127°23'28.6"E
0.6D ICHJ	0.6NM ICHJ	-	
5D CHO	BRG 60.11°/5.00NM CHO	36°46'00.1"N	127°34'42.0"E
R110 CHO	-	-	
NOSON	R 110 CHO/13.00NM CHO	36°40'16.6"N	127°45'26.2"E

INTENTIONALLY

LEFT

BLANK

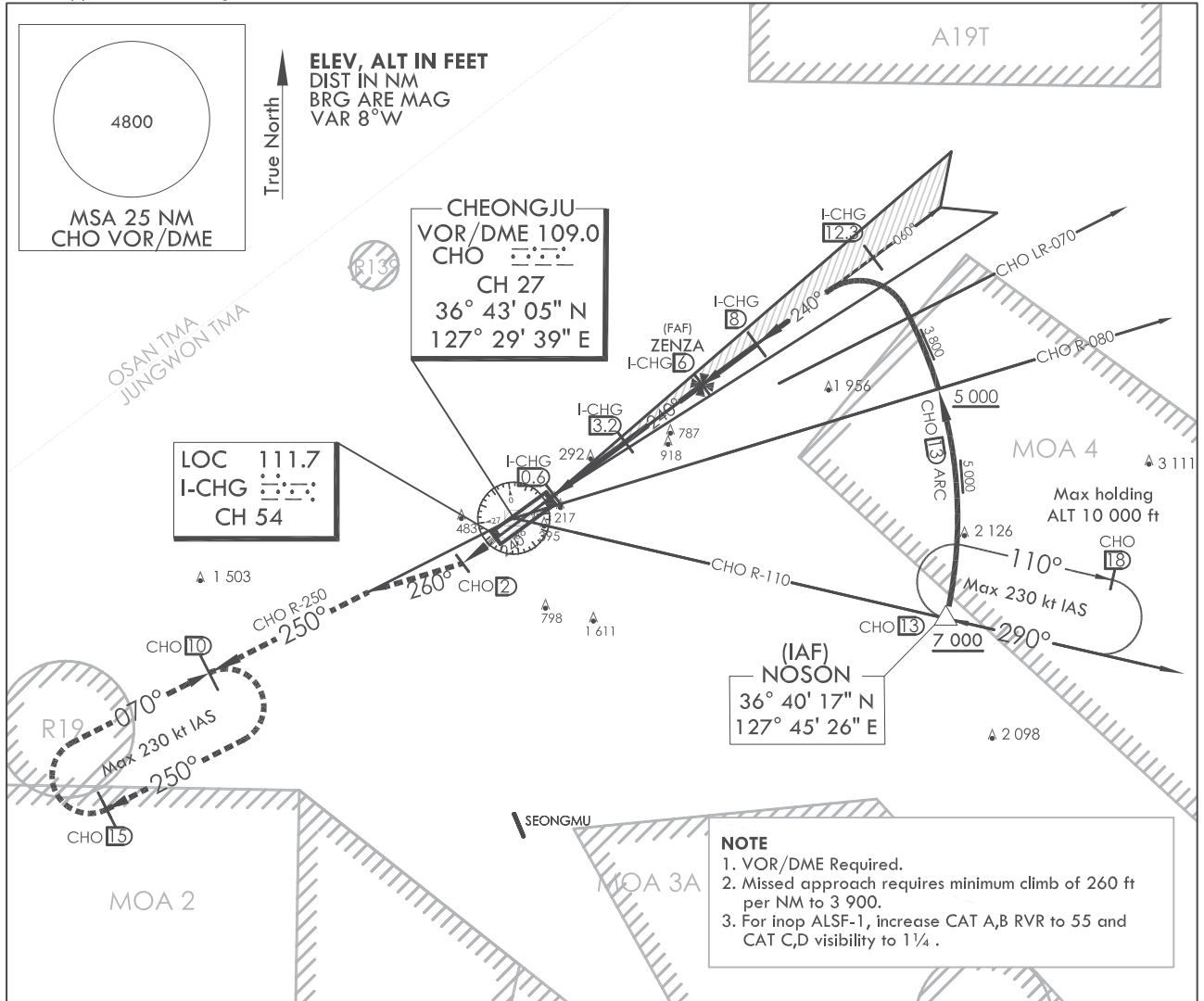
**INSTRUMENT
APPROACH
CHART**

AERODROME ELEV 192 ft
HEIGHTS RELATED TO
THR RWY 24R - ELEV 187 ft

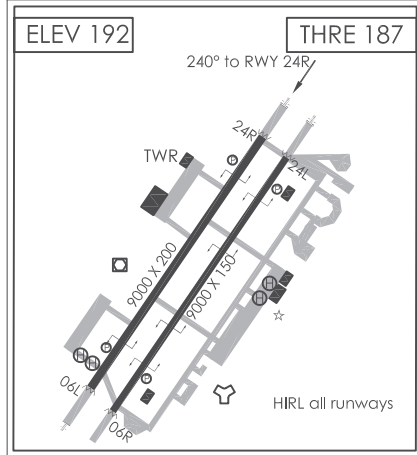
JUNGWON APP 134.0 134.1 134.4
CHEONGJU TWR 118.7 126.2

**CHEONGJU/Cheongju INTL(RKTU)
LOC/DME Y
RWY 24R**

Note : Approach and circling - to land under U.S. TERPS.

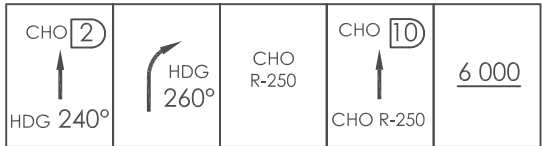


NOTE
1. VOR/DME Required.
2. Missed approach requires minimum climb of 260 ft per NM to 3 900.
3. For inop ALSF-1, increase CAT A,B RVR to 55 and CAT C,D visibility to 1/4 .

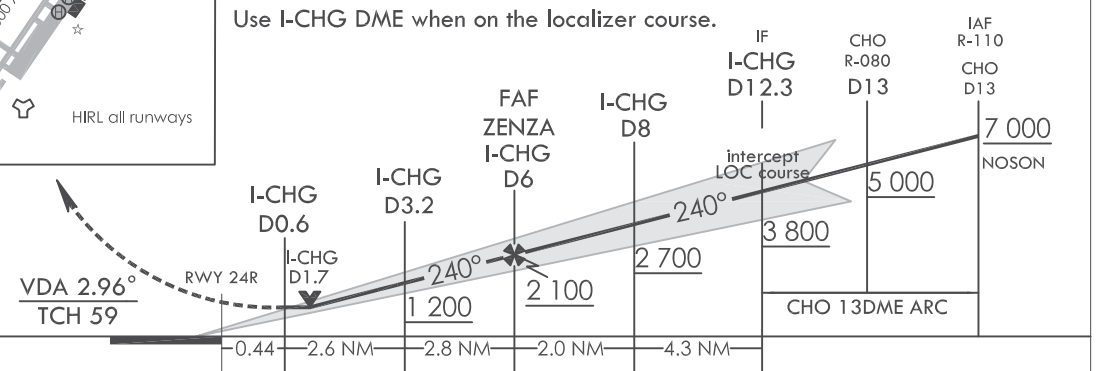


MISSED APPROACH

Climb to 6 000 via heading 240° to CHO VOR/DME 2DME, then right turn heading 260° to intercept CHO R-250 and CHO R-250 to 10DME and continue climb to 6 000 and hold.



Use I-CHG DME when on the localizer course.



CATEGORY		A	B	C	D	E
S-LOC 24R	ALS	620/24	433(500- $\frac{1}{2}$)	620/40	433(500- $\frac{3}{4}$)	N/A
	ALS inop	620/55	433(500-1)	620-1 $\frac{1}{4}$	433(500-1 $\frac{1}{4}$)	N/A
CIRCLING		880-1	688(700-1)	1 200-3 1 008(1 100-3)	2 000-3 1 808(1 900-3)	N/A

Change : Amended an error(I-CHJ→I-CHG).

INTENTIONALLY

LEFT

BLANK

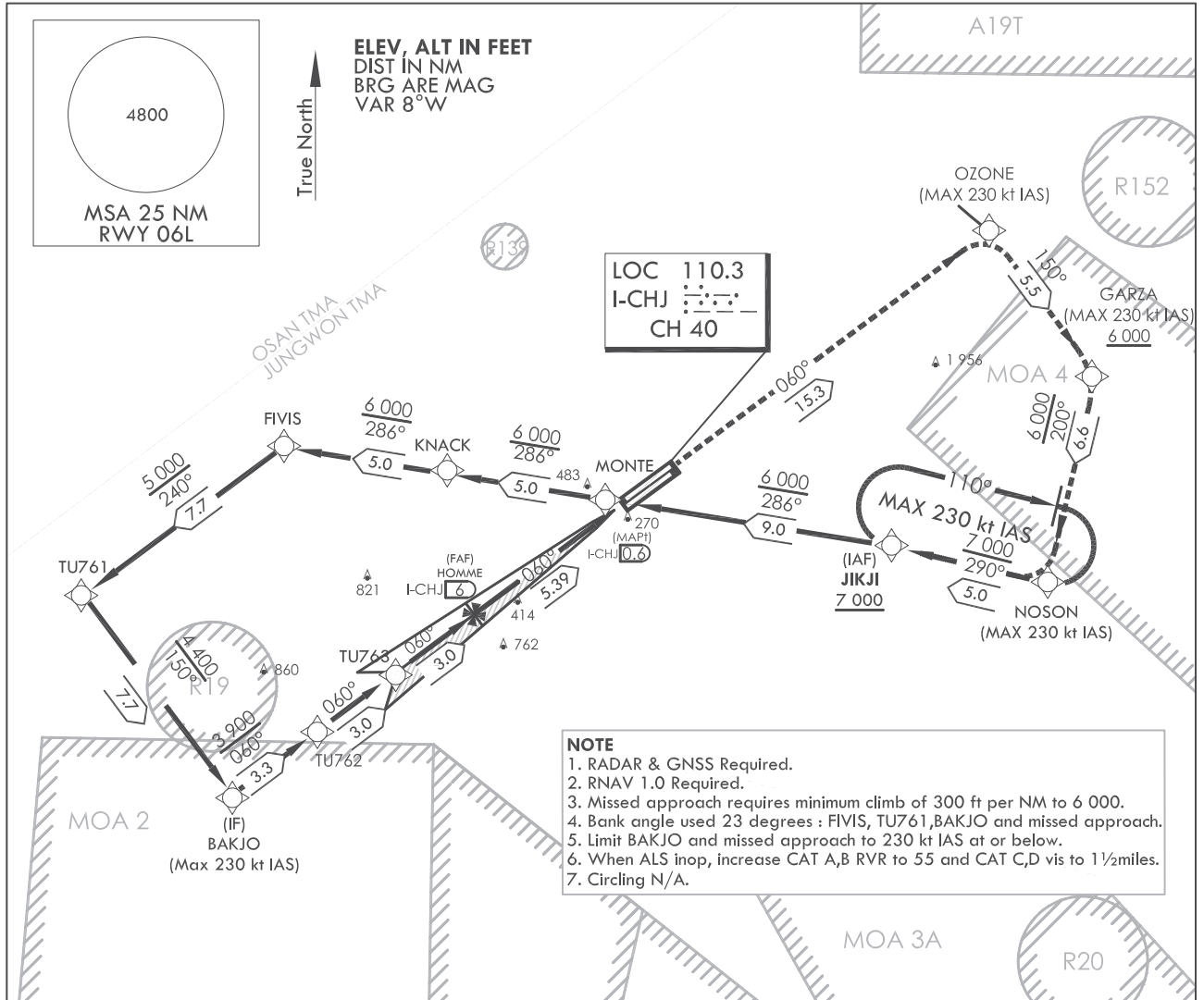
**INSTRUMENT
APPROACH
CHART**

AERODROME ELEV 192 ft
HEIGHTS RELATED TO
THR RWY 06L - ELEV 187 ft

JUNGWON APP 134.0 134.1 134.4
CHEONGJU TWR 118.7 126.2

CHEONGJU/Cheongju INTL(RKTU)
LOC/DME Z
RWY 06L

Note : Approach and circling - to land under U.S. TERPS.



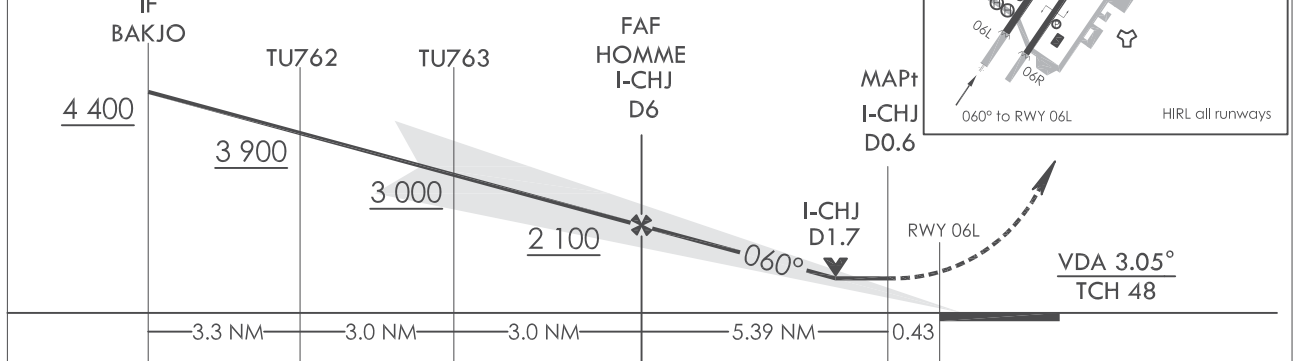
NOTE
1. RADAR & GNSS Required.
2. RNAV 1.0 Required.
3. Missed approach requires minimum climb of 300 ft per NM to 6 000.
4. Bank angle used 23 degrees : FIVIS, TU761, BAKJO and missed approach.
5. Limit BAKJO and missed approach to 230 kt IAS at or below.
6. When ALS inop, increase CAT A,B RVR to 55 and CAT C,D vis to 1½miles.
7. Circling N/A.

↑ tr 060°	◆ OZONE	tr 150°	◆ GARZA	tr 200°	◆ NOSON	tr 290°	◆ JIKJI
		6 000		7 000			

MISSED APPROACH

Climb to 6 000 via on track 060° to OZONE, then track 150° to cross GARZA at or above 6 000, then track 200° to NOSON, then track 290° to cross JIKJI at or above 7 000 and hold.

Use I-CHJ DME when on the localizer course.



CATEGORY		A	B	C	D	E
S-LOC 06L	ALS	700/40 533(600- $\frac{3}{4}$)		700-1 $\frac{1}{4}$ 533(600-1 $\frac{1}{4}$)		N/A
	ALS inop	700/55 533(600-1)		700-1 $\frac{1}{2}$ 533(600-1 $\frac{1}{2}$)		N/A

Change : Amended an error(I-CHG→I-CHJ).

INTENTIONALLY

LEFT

BLANK

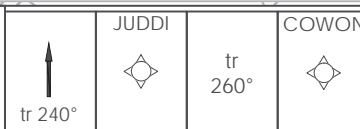
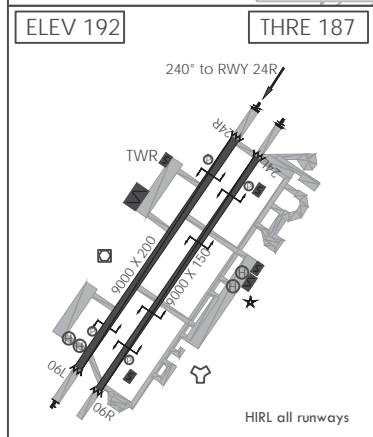
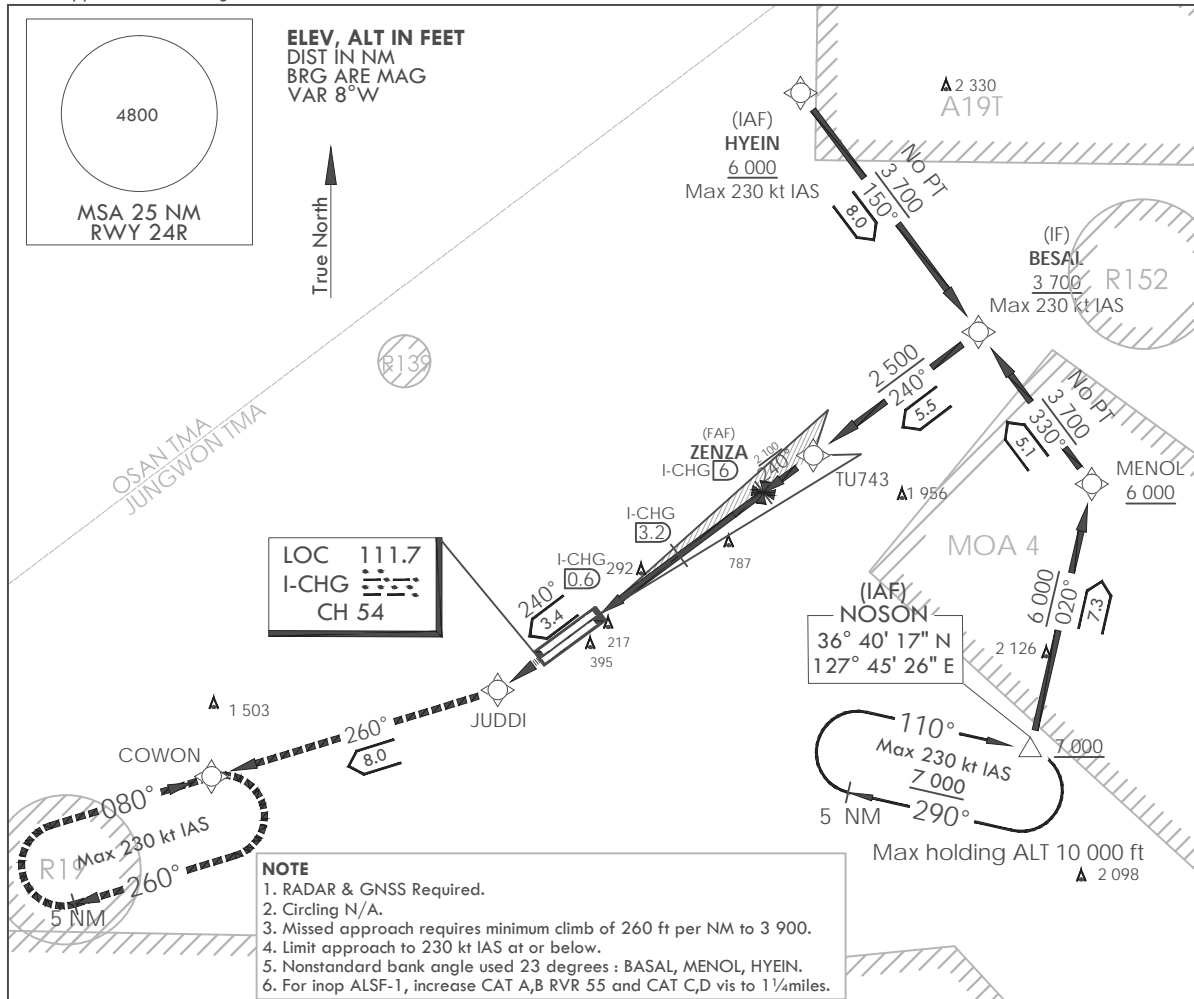
**INSTRUMENT
APPROACH
CHART**

AERODROME ELEV 192 ft
HEIGHTS RELATED TO
THR RWY 24R - ELEV 187 ft

JUNGWON APP 134.0 134.1 134.4
CHEONGJU TWR 118.7 126.2

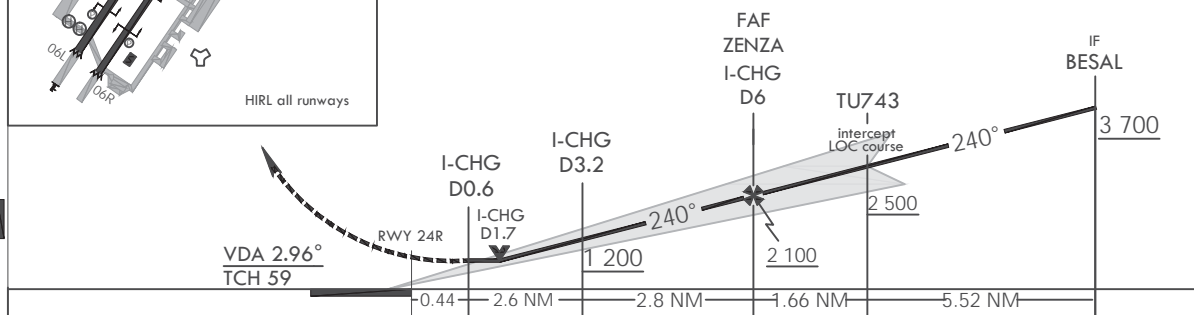
CHEONGJU/Cheongju INTL(RKTU)
LOC/DME Z
RWY 24R

Note : Approach and circling - to land under U.S. TERPS.



MISSED APPROACH
Climb to 6 000 via on track 240° to JUDDI, then track 260° to COWON, then continue climb to 6 000 and hold.

Use I-CHG DME when on the localizer course.



CATEGORY		A	B	C	D	E
S-LOC 24R	ALS	620/24	433(500-½)	620/40	433(500-¾)	N/A
	ALS inop	620/55	433(500-1)	620-1¼	433(500-1¼)	N/A

Change : Amended an error(I-CHJ →I-CHG).

INTENTIONALLY

LEFT

BLANK